

iAdaptAir®



For use with iAdaptAir® S, M, L Models

Due to continuous improvements, the picture included within this owner's manual may differ slightly from the actual product.



For safety and to ensure proper use carefully read the contents of this manual before operating or installing the unit.

Thank You for Choosing The iAdaptAir®

Congratulations, you own the smartest, most effective, user-friendly air purifier. Before operating the iAdaptAir®, please read this manual in its entirety. Doing so will give you important information to keep you safe from harm and ensure you get the most benefits from your device. For additional information please contact us:

Mail: Air Oasis, LLC
Attn: Customer Service
3401 Airway Blvd.
Amarillo, TX 79118

web: www.airoasis.com
e-mail: feedback@airoasis.com
phone: 1-800-936-1764

Table of Contents

Lifetime Warranty.....	Page 1
Important Safety Instructions.....	Page 2
Base Installation.....	Page 3
Operation/Control Panel.....	Page 4
How To Connect To Wi-Fi/Wi-Fi Functionality.....	Page 5 - 9
Maintenance.....	Page 10 - 11
Filter Replacement.....	Page 12 - 13
UVC Lamp Replacement.....	Page 14
Troubleshooting Guide.....	Page 15
Specifications.....	Page 16



To view our warranty information, terms and conditions and privacy policy, go to:

<https://www.airoasis.com/policies/#warranty-policy>

Important Safety Instructions

When operating any electrical appliance, basic precautions should always be followed for safety.

WARNING: To reduce the risk of fire, electric shock or injury:

- Carefully read the entire contents of this manual.
- Do not use outdoors or on wet surfaces.
- Do not use the unit in areas of extreme heat or in the presence of flammable gas.
- This unit should only be serviced by a licensed professional. The warranty will be void and serious injury could occur if serviced by anyone other than a licensed professional.
- Do not handle the wires or appliance with wet hands.
- Do not use damaged or uninsulated wires. If appliance is not working properly call a customer service representative at **1-800-936-1764**.

WARNING: RISK OF ELECTRICAL SHOCK. CAN CAUSE INJURY OR DEATH. DISCONNECT UNIT FROM POWER SUPPLY BEFORE SERVICING.



Store and transport -4° F ~ 180° F, humidity 10% ~ 90% (Non Condensing).



Do not operate unit in ambient temperatures above 150° F.



KEEP OUT OF REACH OF CHILDREN

Use the unit on a flat surface and keep out of direct sunlight.

To prevent electrical shock, please remove the power plug before maintaining or moving the appliance.

Please do not clean the appliance with any type of acid-base solutions to prevent damage and electric shocks.

Do not block the air inlet & outlet.

Make sure the unit is used within the voltage of 110~240V/50~60Hz.

Please do not use a wet hand to insert or remove the power plug to prevent electrical shock.

It is strictly prohibited to rinse the appliance with water. Do not use the appliance near water sources or volatile flammable items to prevent electrical shock.

The product is not a toy, hence it is prohibited for children to play with the appliance in order to prevent damage.

Do not sit or stand on the appliance. Do not use the appliance when it is shaking or tilting. It is prohibited to obstruct the air outlet to prevent reducing the purifying efficiency.

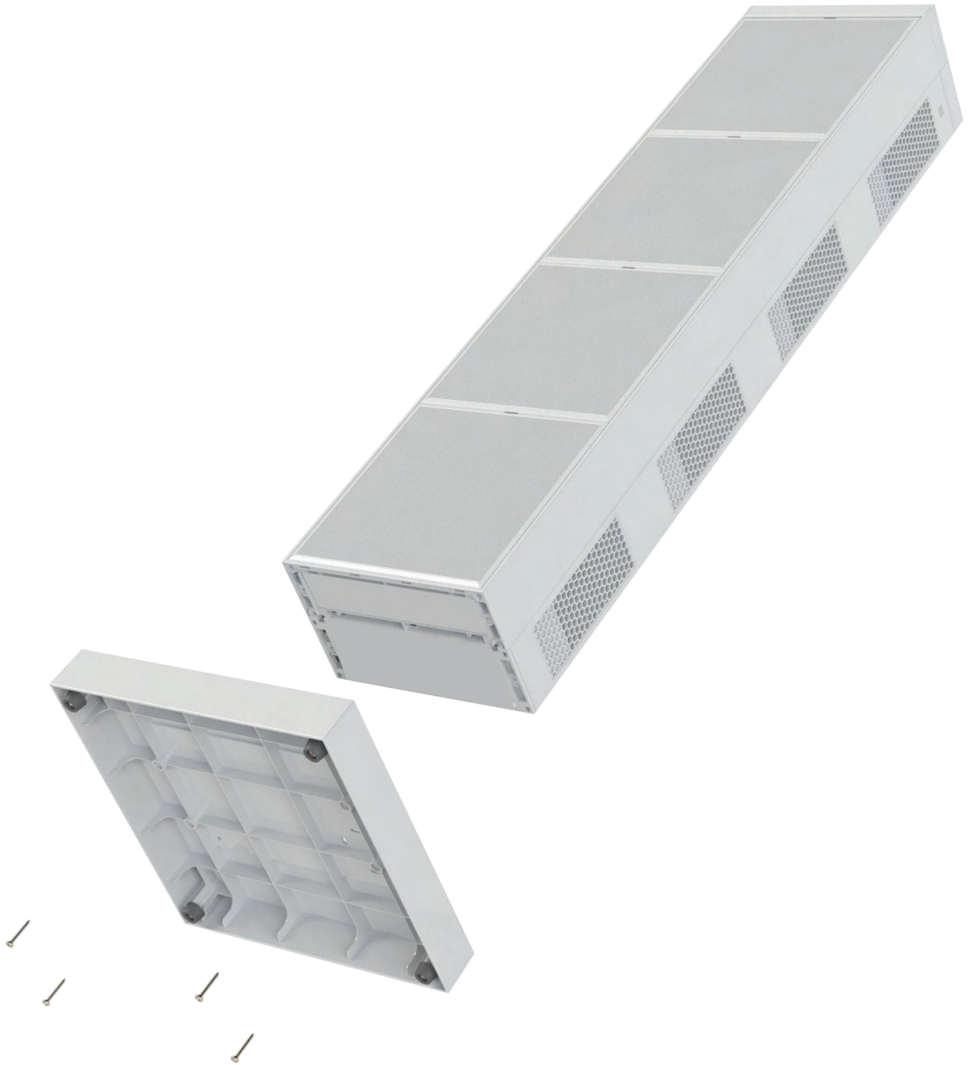
If unit is operating abnormally, please unplug the power, and contact the manufacturer.

If the air purifier is damaged, immediately disconnect the power and contact the manufacturer.

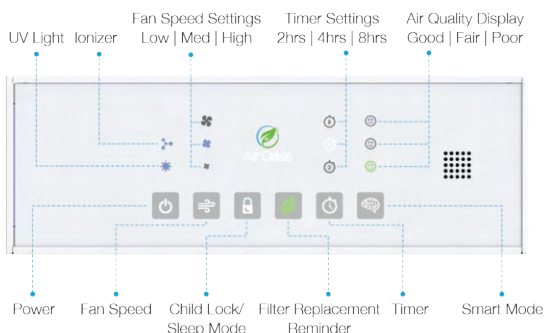
When cleaning, use a soft, dry cloth to gently wipe the air purifier. Use a small brush to softly clean the air outlets.

Base Installation

1. Using the four included screws, attach the base. This will prevent injuries by ensuring the unit is stable and will not fall over.



Operation

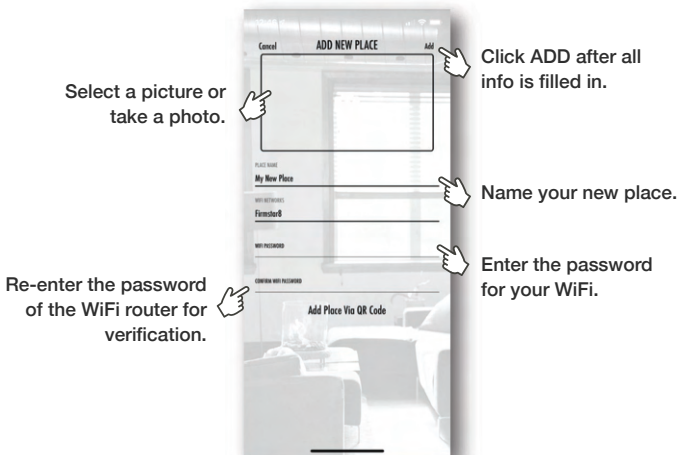
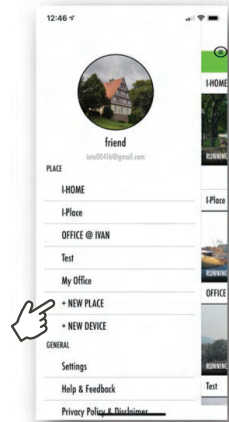
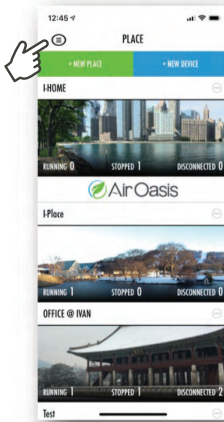
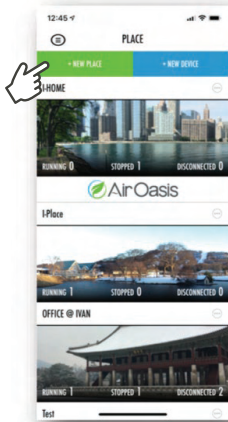


Control Panel

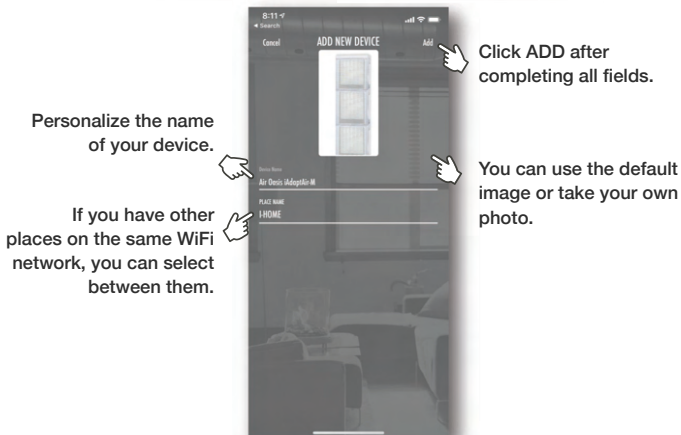
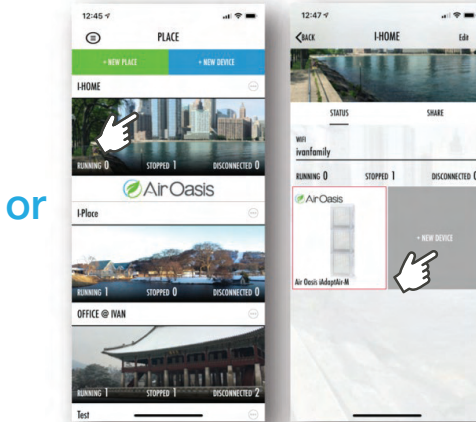
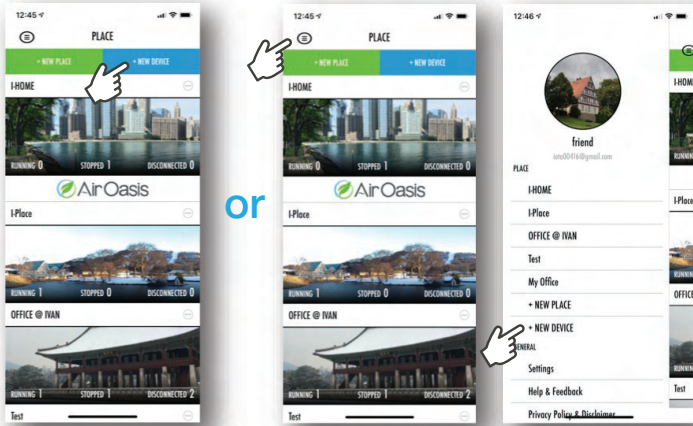
- Feather touch controls are operated with a light touch of the finger.
 - The backlit controls allow for easy operation even in dark conditions.
- 1. After connecting the power supply**, you will hear one beep and the control panel will illuminate for two seconds before entering standby mode.
 - 2. Power button:**
 - 1st press** turns on the unit, ionizer, UV light and low fan speed.
 - 2nd press** turns off the ionizer.
 - 3rd press** turns off the UV light.
 - 4th press** keeps the UV light off and turns ionizer on.
 - 5th press** switches the unit to standby mode.
 - 3. Fan Speed:** will cycle the fan speed to Low, Medium, or High.
 - 4. Timer:** Sets an auto off timer for two, four, or eight hours.
 - 5. Child Lock/Sleep Mode:** Press for three seconds until you hear a single beep, signifying Child Lock/Sleep Mode has been activated. Once activated, all settings will be locked and control panel lights will dim. Tap any button to temporarily illuminate status icons to view locked settings. Pressing the Child Lock/Sleep Mode button for three more seconds will unlock the control panel.
 - 6. Smart Mode:** Press to activate Smart Mode. While in Smart Mode, the fan speed will automatically adjust according to your air quality. If the iAdaptAir® senses a reduction in air quality, the fan speed will automatically increase. When the air quality improves, the fan speed will automatically decrease to extend filter life.

How To Connect To WiFi (Optional)

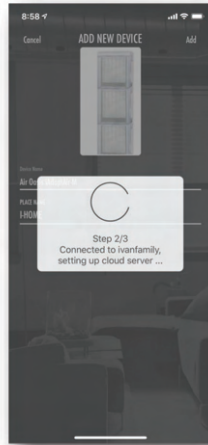
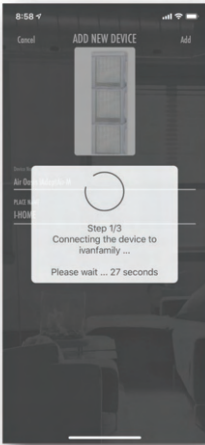
1. Open the WiFi settings on your smart phone and connect to your WiFi (must be 2.4GHz, as the iAdaptAir® cannot connect to 5GHz).
2. Plug in your iAdaptAir®.
3. Keep the iAdaptAir®, router and your smart phone within a five ft. circle.
4. Click +NEW PLACE if you have not previously connected the app to a WiFi network.



5. Click +NEW DEVICE and scan the device QR code. It's located on the bottom right corner of the quickstart guide and under the filter cover.



6. Step 1/3: writing the router information to the device.
7. Step 2/3: connecting the device with the cloud server.
8. Step 3/3: updating the device information into the app.



9. If connecting the device fails, check the following...

- Do you have a WiFi signal?
- Did you enter the correct WiFi password?
- Is the iAdaptAir® plugged in?
- Is your smart phone connected to the same WiFi network as your iAdaptAir® ?
- Is the iAdaptAir® connected to another router? If it is, turn that router off and wait for 5 minutes; or reset the iAdaptAir's® WiFi settings (see next page)



Wi-Fi Functionality using the Control Panel

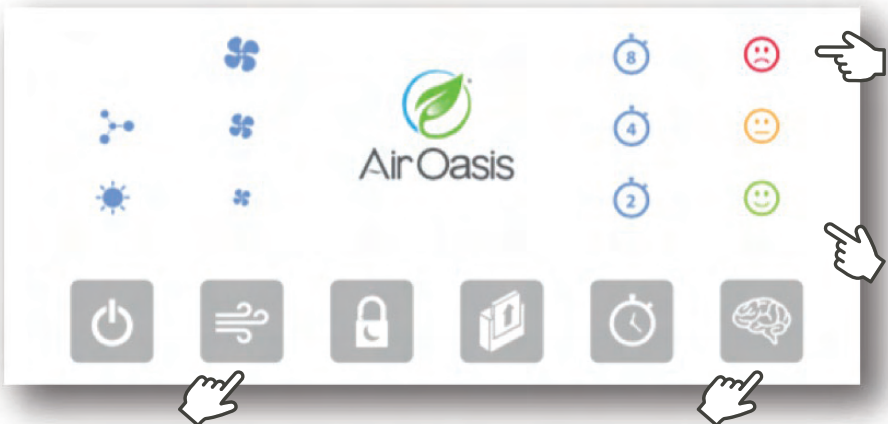
Viewing Wi-Fi Status

1. Press Smart Mode button once at standby (power plugged-in but not operating). It will show the status of the Wi-Fi connection.
Green Flashing Happy Face = not connected
Solid Green Happy Face = connected
Red Frowning Face = Wi-Fi turned off
2. Hold the button for more than 3 sec., it will reset the Wi-Fi network name and password.
3. The status will show for 1 min. and then return to normal automatically.

IMPORTANT: Don't reset the device by step 2 if device is still registered in the APP. You will need to delete the device from APP before restarting.

Turn Wi-Fi On/Off

Hold Fan Speed button for more than 3 sec. at standby mode. The Wi-Fi will turn off. The Wi-Fi status will be shown by the red & green LED for one min. Unplug the unit for 5 seconds and the Wi-Fi will automatically restart after the unit is plugged back in.






Download on the
App Store



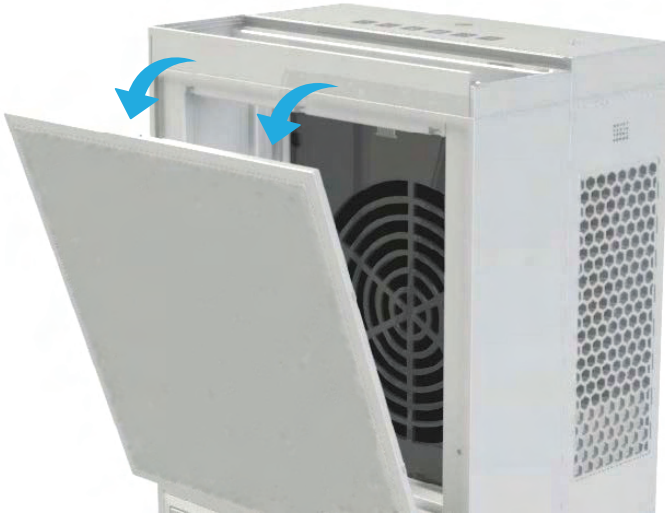
GET IT ON
Google Play

Maintenance

Dust Guard Maintenance

 Ensure the iAdaptAir® is disconnected from its' power source before performing any maintenance.

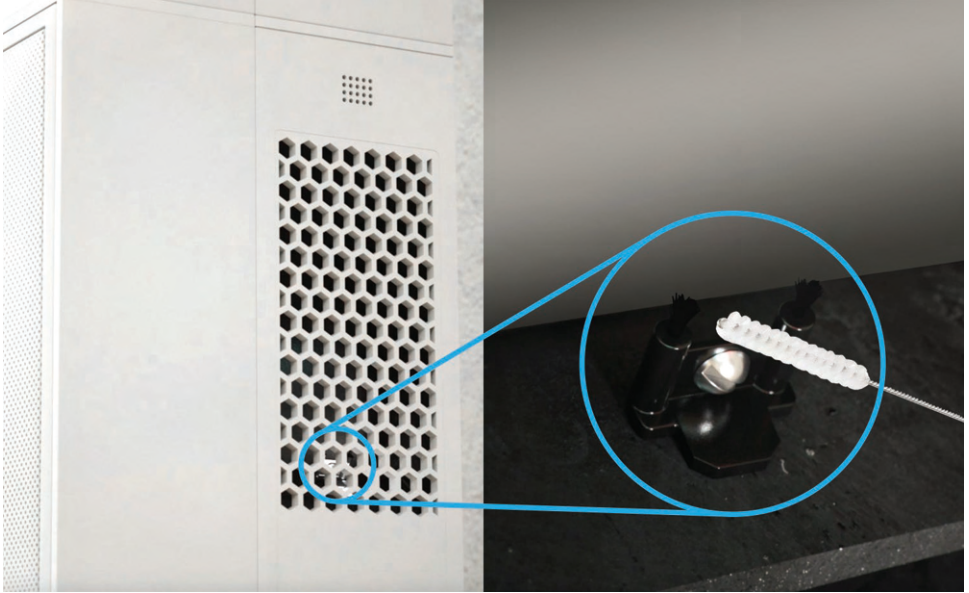
- Pivot the dust guard outwards and lift up to remove it from the air purifier.



- Use a vacuum to remove any debris. Wipe down the dust guard with a damp rag. Dry before replacing in the iAdaptAir®.



- Bi-Polar Ion Brushes: Using a pipe cleaner or a 0.2" or less diameter dowel rod to insert in to the 2 holes in front of the brushes to knock off any debris buildup. Clean the brush heads periodically for optimal effectiveness.



- Use a soft cloth to clean the exterior surfaces. (Do not use chemicals or alcohol)



Filter Replacement

When the filter replacement reminder turns red, the filter is nearing the end of its' useful lifespan & needs to be replaced soon.

1. Open the filter cover by sliding it to the right.



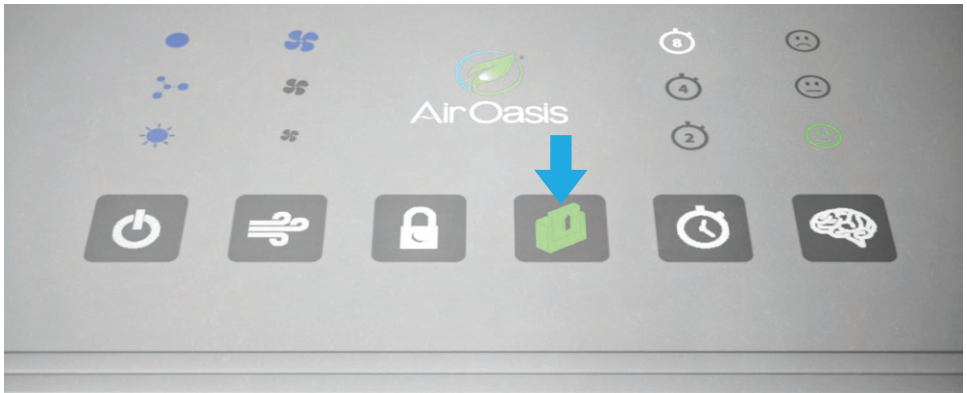
2. Take out the old filter & replace with a new filter



3. Close the filter cover.



4. Press and hold the “Filter Replacement Reminder” for 3 seconds to reset it.



UV Lamp Replacement

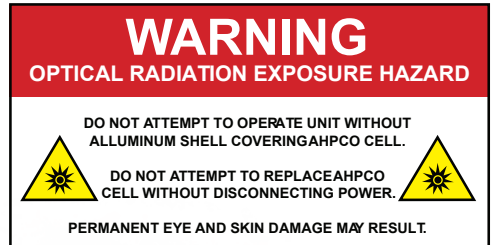
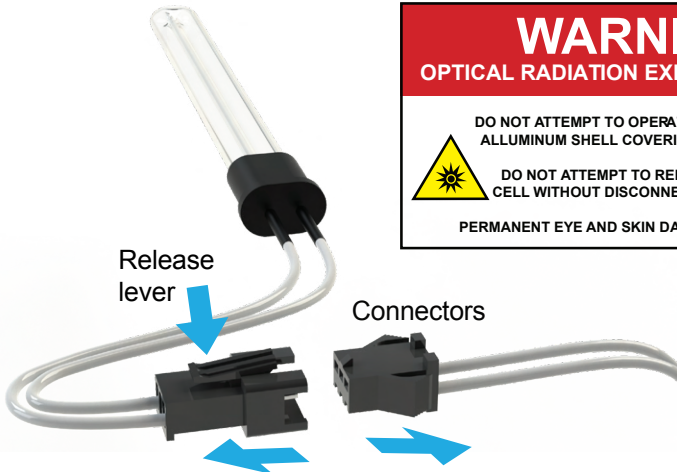
For optimal performance and maximum efficiency of your iAdaptAir®, ensure all UV Lamps are replaced annually.

! Ensure the iAdaptAir® is disconnected from its' power source before performing any maintenance. UV Lamp may be hot. Allow time for the lamp to cool before removing it.

1. Remove the filter cartridge and dust guard. (See instructions on pages 10-11)
2. Slightly rotate and move the UV Lamp forward to remove it from the clips.



3. Squeeze the release lever on the back of the lamp connector while pulling connector apart.



4. Reverse the steps from (3-4) to install the new UVC lamp.

Hg lamp contains mercury. Manage in accord with disposal laws. Find disposal centers at www.earth911.org.

Troubleshooting Guide

Malfunction	Checked Items	Solving Measures
The Machine is Not Working	Is the power switched on?	Press the power button
	Is the power adapter loose or broken?	Connect or change the power adapter
Odors from the Air Outlet	The filter cartridge has too much debris.	Replace the filter cartridge
	Filter lifespan has expired.	Replace the filter cartridge
Poor Performance	Is the iAdaptAir™ placed in an unventilated area or is something obstructing the inlet or outlet.	Change its location and remove the obstructions.
No Air Flow	Foreign items blocking the air inlet or outlet.	Remove foreign items

iAdaptAir® Specifications

Specifications	iAdaptAir-S	iAdaptAir-M	iAdaptAir-L
Warranty:	Lifetime Warranty	Lifetime Warranty	Lifetime Warranty
Voltage:	100-240VAC	100-240VAC	100-240VAC
Rated Power:	8 WATTS	24 WATTS	32 WATTS
Dimensions:	5.4in x 8.5in x 9.7in	11.2in x 11.2in x 28.3in	11.2in x 11.2in x 37in
Weight:	7 lbs.	15.5 lbs.	20 lbs.
Fan Speed:	Low 700rpm, Medium 1000rpm, High 1200rpm	Low 700rpm, Medium 1000rpm, High 1200rpm	Low 700rpm, Medium 1000rpm, High 1200rpm
Timer Settings:	2hr, 4hr, 8hr	2hr, 4hr, 8hr	2hr, 4hr, 8hr
Ozone:	0.00 PPM	0.00 PPM	0.00 PPM
Replacement Filter Cartridge:	Model #: AOIA-SF HEPA, carbon and AHPCO	Model #: AOIA-MF HEPA, carbon and AHPCO	Model #: AOIA-LF HEPA, carbon and AHPCO
Ion Output:	20,000,000 positive and negative	20,000,000 positive and negative	40,000,000 positive and negative
Noise Level:	25dB low speed to 52dB high speed	25dB low speed to 52dB high speed	25dB low speed to 52dB high speed



***We Care
About
Your Air***



Copyright © 2019 Air Oasis, LLC. All Rights Reserved.